



SCREENING PROCEDURES

**Grace Pacific Corporation Recycling Facility
91-920 Farrington Highway
Kapolei, Hawaii 96707**

**Telephone (808) 672-3535
Facsimile (808) 672-3998**

September 04, 2007

TABLE OF CONTENTS

<u>SECTION</u>	<u>TITLE</u>	<u>PAGE</u>
1.0	GENERAL SCREENING PROCEDURES	1-1
2.0	ACCEPTANCE CRITERIA FOR INCOMING MATERIALS	2-1
2.1	General Information	2-1
2.2	Inspection	2-2
2.3	Sampling and Analysis Requirements for Painted Materials	2-2
2.4	Reporting Requirements	2-3
2.5	Acceptance of Materials for Recycling	2-3
3.0	INCOMING MATERIAL PROFILE FORM	3-1
4.0	LIST OF APPROVED LABORATORIES	4-1
5.0	REQUEST FOR CLEARANCE NUMBER FORM	5-1
6.0	UNIFORM SOLID WASTE MANIFEST	6-1



GENERAL SCREENING PROCEDURES

Grace Pacific Corporation Recycling Facility
91-920 Farrington Highway, Kapolei, Hawaii 96707
Telephone (808) 672-3535 / Facsimile (808) 672-3998

GENERAL INFORMATION. The Grace Pacific Corporation Recycling Facility operates in accordance with the recycling permit issued by the State of Hawaii Department of Health [DOH] Office of Solid Waste Management (Permit No. RY-0049-02). The Recycling Facility will only accept concrete and asphalt that is clean, uncontaminated, and source-separated. Mixed incoming loads will not be accepted. To accept materials for recycling, generators must follow the procedures set by the Recycling Facility.

ACCEPTANCE OF INCOMING MATERIALS FOR RECYCLING. Generators must follow the guidelines outlined in the document entitled, **Acceptance Criteria for Incoming Materials**. That document contains a description of materials acceptable for recycling, screening procedures, and other information. The general procedures for acceptance of incoming materials are outlined below.

STEP 1 - PERFORM INSPECTION. All incoming materials must be inspected prior to acceptance. The Recycling Facility reserves the right to inspect all structures prior to demolition.

STEP 2 - PERFORM REQUIRED SAMPLING AND ANALYSIS. The paints on all painted incoming materials must be sampled and analyzed for total lead (not TCLP lead) prior to acceptance. XRF result is accepted if accompanied by proper laboratory testing. All analytical should be provided with detail descriptions of the samples including which portion of the building the sample is taken, the color, type of material, etc. The Recycling Facility reserves the right to sample the paints on all painted incoming materials prior to acceptance. For those incoming materials that have undergone lead-based paint abatement, a clearance report or equivalent documentation must be provided to the Recycling Facility.

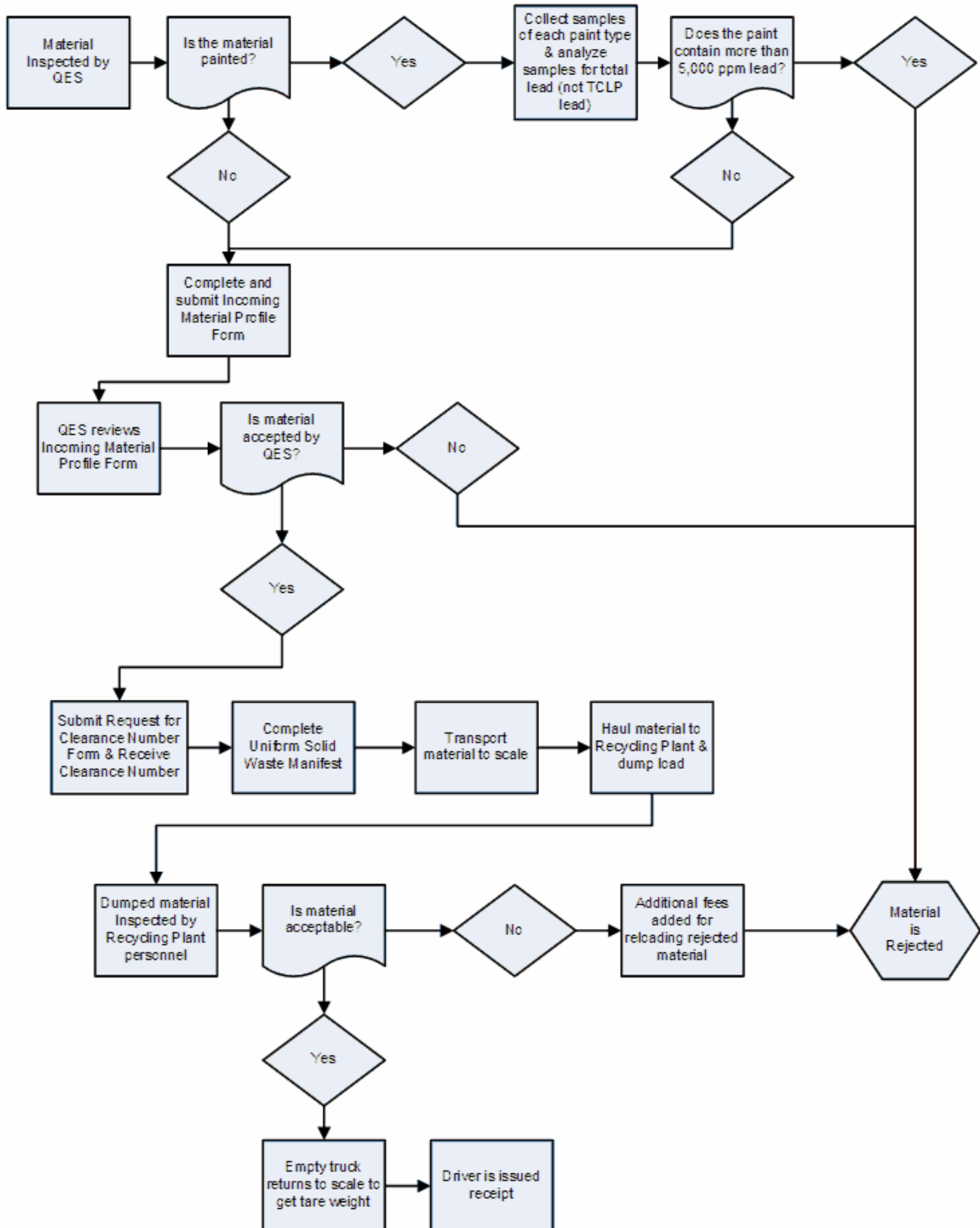
STEP 3 - SUBMIT REQUIRED REPORTING. The generator must submit a completed **Incoming Material Profile Form**. If the incoming materials are painted, a complete copy of the laboratory analytical report and laboratory chain-of-custody form also must be submitted. For those incoming materials that have undergone lead-based paint abatement, a clearance report or equivalent documentation must be submitted. The Recycling Facility reserves the right to reject any materials that are determined to be unsuitable for acceptance based on the reporting submitted by the generator.

STEP 4 - OBTAIN A CLEARANCE NUMBER. Upon notification by the Recycling Facility of acceptance of the incoming materials, the generator must submit a completed **Request for Clearance Number Form**.

STEP 5 - PREPARE UNIFORM SOLID WASTE MANIFEST. Once a clearance number has been issued by the Recycling Facility, the generator must complete a **Uniform Solid Waste Manifest**. Each transport vehicle carrying an incoming load must present a completed manifest upon arrival at the Recycling Facility.

QUESTIONS. If there are any questions regarding the procedures described above, please contact Angel Fredeluces at 808-620-6384 (telephone) or 808-672-8619 (facsimile).

INCOMING MATERIAL GENERAL PROCEDURES FLOW CHART





PRICE SHEET FOR CONCRETE AND ASPHALT RECYCLING

Grace Pacific Corporation Recycling Facility
91-920 Farrington Highway, Kapolei, Hawaii 96707
Telephone (808) 672-3535 / Facsimile (808) 672-3998

Please Call Our Office for Quantity Pricing

CRUSHER-READY MATERIAL. Crusher-ready material consists of clean concrete or asphalt with no co-mingling, no exposed rebar (less than one inch is acceptable), and no pieces larger than 24" x 24" x 12". **No wood, paper, or other contaminants will be accepted.**

Asphalt	Block	Boulders	Concrete	Ready Mix
\$12.00	\$13.00	\$12.00	\$12.00	\$100.00
per ton	per ton	per ton	per ton	per load

OVER-SIZED MATERIAL. Over-sized material consists of hard to handle and non-conforming loads.

Asphalt	Block	Footings	Pile Caps
\$14.00	\$18.00	\$18.00	\$18.00
per ton	per ton	per ton	per ton

DELETERIOUS LOADS. Deleterious loads are adulterated loads containing wood, debris, and other unacceptable materials. Loads containing less than 95% asphalt or concrete materials will not be accepted. If the load was dropped onto the ground, a \$75 re-loading fee will be assessed.

Deleterious Loads
\$25.00
per ton

We reserve the right to refuse any load at any time. If the load was dropped onto the ground, a \$75 reloading fee will be assessed. Further charges for hand labor may be billed on a per hour basis.

The classification of dumped material by Recycling Facility personnel will be final. All drivers must sign a tag certifying that the load does not contain hazardous materials. Improperly disposing of hazardous waste is **PUNISHABLE BY LAW.**

All prices are FOB the Makakilo Recycling Facility and are subject to applicable sales tax (4.167%).

QUESTIONS. If there are any questions regarding the procedures described above, please contact Angel Fredeluces at 808-620-6384 (telephone) or 808-672-8619 (facsimile).



ACCEPTANCE CRITERIA FOR INCOMING MATERIALS

**Grace Pacific Corporation Recycling Facility
91-920 Farrington Highway, Kapolei, Hawaii 96707
Telephone (808) 672-3535 / Facsimile (808) 672-3998**

SECTION 1 - GENERAL INFORMATION. The Grace Pacific Corporation Recycling Facility operates in accordance with the recycling permit issued by the State of Hawaii Department of Health [DOH] Office of Solid Waste Management (Permit No. RY-0049-02). The Recycling Facility will only accept concrete and asphalt that is clean, uncontaminated, and source-separated. Mixed incoming loads will not be accepted. Generators of material for recycling must provide documentation that the material meets the conditions of the permit. Documentation shall be made using the ***Incoming Material Profile Form*** obtainable from the Recycling Facility.

The following materials will NOT be accepted.

1. Materials that are contaminated by hazardous substances. Hazardous substances include (but are not limited to) lead, asbestos, polychlorinated biphenyls [PCBs], infectious waste, and radioactive materials.
2. Hazardous waste. This applies to any material that fails the TCLP test for any hazardous characteristic (ignitability, corrosivity, reactivity, or toxicity). An example of a hazardous waste is a material that fails the TCLP test for lead (the material contains lead at a concentration greater than 5 milligrams per liter).
3. Materials coated by paint that contains lead equal to or in excess of the Environmental Protection Agency [EPA] limit (1 milligram per square centimeter or 0.5 percent by weight).
4. Rubbish.
5. Green Waste.
6. Metal Debris. This does not include rebar or other metal contained within concrete.

The following materials are acceptable, provided they pass screening tests and are not mixed.

1. Concrete. If painted, the paint must be analyzed for total lead.
2. Asphalt. If painted, the paint must be analyzed for total lead.
3. Cinder Block. If painted, the paint must be analyzed for total lead.
4. Concrete Block. If painted, the paint must be analyzed for total lead.
5. Bricks. If painted, the paint must be analyzed for total lead.
6. Ceramic Material. Glazed materials must be analyzed for total lead. If painted, the paint must be analyzed for total lead.
7. Porcelain. If painted, the paint must be analyzed for total lead.

To determine whether the incoming material is suitable for recycling, the generator must screen the material and provide documentation that the material is acceptable by the Recycling Facility.

Screening includes the following actions.

1. Inspection.
2. Sampling and Analysis for Total Lead and/or Submittal of Clearance Report.
3. Reporting.

Qualified Environmental Scientist [QES]. The screening must be performed by a Qualified Environmental Scientist [QES]. The Recycling Facility shall reserve the right to accept or reject the qualifications of the QES as adequate for providing the screening. The QES must meet at least one of the following requirements:

- ◆ A bachelor's degree in environmental science, environmental studies, geology, engineering, chemistry, or a related field from an accredited institution and five years or more of applicable experience.
- ◆ A master's degree in environmental science, environmental studies, geology, engineering, chemistry, or a related field from an accredited institution and two to five years of applicable experience.
- ◆ Experience with solid and hazardous waste management, field sampling, scientific data interpretation and analysis, and state and federal environmental laws, rules, regulations, policies, and procedures.
- ◆ A certification such as Professional Geologist or Professional Engineer or other certifications indicating advanced training in a relevant field.

SECTION 2 - INSPECTION. The Recycling Facility reserves the right to inspect all structures prior to demolition. **Generators must inform the Recycling Facility when the structures are available for inspection prior to demolition.** If the structures already have been demolished, the Recycling Facility QES or a QES retained by the Recycling Facility shall be permitted to inspect the incoming (demolished) materials prior to acceptance. All incoming materials must be inspected by a QES. A description of the material and its source must be documented on the ***Incoming Material Profile Form***. Required information includes a description of the material, its source, and the generator.

SECTION 3 - SAMPLING AND ANALYSIS REQUIREMENTS FOR PAINTED MATERIALS. The Recycling Facility reserves the right to sample all painted incoming materials prior to acceptance. A representative sample(s) of the paints on all painted incoming materials must be collected and submitted to an approved laboratory for total lead analysis to determine if the materials are coated with lead-based paint (i.e., paint that contains 5,000 ppm lead or greater). A list of approved laboratories is available from the Recycling Facility upon request. The sampling procedure and the laboratory analytical results must be documented on the ***Incoming Material Profile Form***. For those incoming materials that have undergone lead-based paint abatement, a clearance report or equivalent documentation must be provided to the Recycling Facility.

Sample Collection Procedure. Sample collection shall be performed by the generator's QES, unless otherwise authorized by the QES. The sampling procedure shall be documented on the Incoming Material Profile Form. **For incoming materials that have painted surfaces, the samples must include each readily identifiable, distinct type or color of paint. Samples of materials coated by distinct types or colors of paint shall not be composited together.** The sample(s) shall be delivered to the laboratory under chain-of-custody. A copy of the completed laboratory chain-of-custody form must be included with the ***Incoming Material Profile Form***.

Laboratory Analysis. The laboratory used to analyze the samples must be approved by the Recycling Facility. A list of approved laboratories is available from the Recycling Facility upon request. Laboratory analytical results received from a laboratory that does not meet the approval of the Recycling Facility shall not be used to determine acceptance of painted incoming materials.

The sample(s) shall be analyzed for total lead (not TCLP lead) using a DOH-approved EPA SW-846 method (for example, EPA Method 6010B).

Clearance Report for Abated Incoming Materials. For those incoming materials that have undergone lead-based paint abatement, a clearance report or equivalent documentation must be provided to the Recycling Facility. The clearance report or equivalent documentation will be reviewed by the Recycling Facility QES for compliance with the sampling and analysis requirements for painted incoming materials. Based on the results documented in the clearance report or equivalent documentation, abated incoming materials may be accepted without additional sampling and analysis.

SECTION 4 - REPORTING REQUIREMENTS. The following items must be submitted to the Recycling Facility for review, as applicable: (1) a completed **Incoming Material Profile Form**, (2) a complete copy of the laboratory analytical report, and (3) all laboratory chain-of-custody forms. The laboratory report must be signed by an authorized representative of the laboratory, and it must include quality assurance [QA] and quality control [QC] information for the submitted analysis.

The **Incoming Material Profile Form**, laboratory analytical report, and laboratory chain-of-custody form will be reviewed by the Recycling Facility QES to determine the incoming material's suitability for acceptance. If the incoming materials are painted or have undergone lead-based paint abatement, the sampling procedures used, the laboratory analytical results and, if applicable, the clearance report or equivalent documentation will be examined carefully. Based on the review, the incoming materials will either be accepted or rejected by the Recycling Facility. The Recycling Facility reserves the right to reject any materials that are determined to be unsuitable for acceptance.

SECTION 5 – ACCEPTANCE OF MATERIALS FOR RECYCLING. Upon a determination of acceptance of the incoming materials, the Recycling Facility will inform the generator. Following notification of acceptance, the generator must complete a **Request for Clearance Number Form**, which is available from the Recycling Facility, and submit the form to the Recycling Facility. The Recycling Facility will review the **Request for Clearance Number Form** for completeness and accuracy. Following the review, the Recycling Facility will issue a clearance number.

Once the generator has received a clearance number, the incoming materials can be transported to the Recycling Facility. Transport vehicles must provide a completed **Uniform Solid Waste Manifest**, which is available from the Recycling Facility.

QUESTIONS. If there are any questions regarding the procedures described above, please contact Angel Fredeluces at 808-620-6384 (telephone) or 808-672-8619 (facsimile).



INCOMING MATERIAL PROFILE FORM

Grace Pacific Corporation Recycling Facility
91-920 Farrington Highway, Kapolei, Hawaii 96707
Telephone (808) 672-3535 / Facsimile (808) 672-3998

1. Generator Information

Generator:
Generator Address:
Address of Material Generation:
Address Where Material is Stored:
Type of Facility Where Material was Generated:
Contact Person: Phone: Email:

2. Incoming Material Information

Type of Material: () Concrete () Asphalt
Condition of Material: () Painted () Unpainted
Description of Material:
Amount of Material (tons or cubic yards):
How was the material generated?

3. Transportation Information

Method of Shipment: () Bulk Solid () Other
Transportation Company:

4. Total Lead Analysis (If Incoming Materials are Painted or Abated) – Do not submit TCLP Lead Analysis

Range (Min – Max) ppm ppm
(minimum concentration) (maximum concentration)

5. Sampling and Laboratory Documentation (If Incoming Materials are Painted or Abated)

Required Attachments: () Laboratory Analytical Report () Laboratory Chain-of-Custody Form
() Clearance Report or Equivalent Documentation (only for abated materials)
Laboratory:

6. Sampling Procedure (If Incoming Materials are Painted or Abated)

Describe Sampling Procedure:

**INCOMING MATERIAL PROFILE FORM
(continued)**

7. Contaminants

Does the material contain any of the following contaminants?

- | | | | | | |
|-----------|---------|--------|------------------------|---------|--------|
| PCBs | () Yes | () No | Hazardous Waste: | () Yes | () No |
| Asbestos: | () Yes | () No | Infectious Waste: | () Yes | () No |
| Metal: | () Yes | () No | Radioactive Materials: | () Yes | () No |
| Other: | () Yes | () No | | | |

Other (describe): _____

8. Indicate method(s) used to determine the presence or absence of items listed in Section 7. Include analytical methods (such as EPA Method Number), if applicable.

9. Qualified Environmental Scientist Certification

Sampler's Name: _____ Sample Date: _____

Sampler's Title: _____

Sampler's Employer (if other than Generator): _____

Sampler's Signature: _____

The sampler's (Qualified Environmental Scientist's) signature above certifies that all of the information contained in this INCOMING MATERIAL PROFILE FORM is accurate and that all of the samples submitted for analysis are representative of the material described above.

10. Generator Certification

By signing this Incoming Material Profile Form, the Generator certifies the following:

- A. The material described above is not a *Hazardous Waste* as defined by the EPA or the State of Hawaii.
- B. The material described above does not contain radioactive materials, infectious waste, PCBs at concentrations above federal or state regulatory limits, or asbestos.
- C. The statements and attachments contain true and accurate descriptions of the material for recycling. All relevant information regarding known or suspected hazards in the possession of the Generator has been disclosed.
- D. The analytical data presented in this Form or attached to this Form were derived from testing representative samples collected using the procedures described above.
- E. If any changes occur in the character of the material, the Generator shall notify a Recycling Facility representative immediately.

Generator's Signature: _____ Title: _____

Name (type or print): _____ Date: _____



LIST OF APPROVED LABORATORIES

Grace Pacific Corporation Recycling Facility
91-920 Farrington Highway, Kapolei, Hawaii 96707
Telephone (808) 672-3535 / Facsimile (808) 672-3998

HAWAII LABORATORIES. The Grace Pacific Corporation Recycling Facility has approved the following laboratories for performing lead analyses of painted incoming materials. The use of other Hawaii laboratories must be approved by the Recycling Facility prior to analysis.

Laboratory	Contact Person	Phone No.	Fax No.
Advanced Analytical Laboratory, LLC 544 Ohohia Street Honolulu, HI 96819	Uwe Baumgartner	836-2252	836-2250
Columbia Analytical Services, Inc. c/o Valley Well Drilling 91-235A Oihana Street Kapolei, HI 96707	Tracie Sober	682-1564	682-5814
ESN Pacific 1818 Kahai Street Honolulu, HI 96819	Dave Davis	847-0067	847-0917
Inalab 3615 Harding Avenue, Suite 308 Honolulu, HI 96816	Mark Hagadone	735-0422	735-0047
Oceanic Analytical Laboratory, Inc. 99-193 Aiea Heights Drive, Suite 121 Aiea, HI 96701-3900	Aiden Scott	486-5227	486-2456

MAINLAND U.S. LABORATORIES. The Grace Pacific Corporation Recycling Facility will accept laboratory analytical reports from Mainland United States laboratories for lead analyses of painted incoming materials. **However, the use of Mainland United States laboratories must be approved by the Recycling Facility prior to analysis.**



REQUEST FOR CLEARANCE NUMBER FORM

Grace Pacific Corporation Recycling Facility
91-920 Farrington Highway, Kapolei, Hawaii 96707
Telephone (808) 672-3535 / Facsimile (808) 672-3998

Site Address (w/ Zip Code):
Site Description:
Generator:
Owner of Property: Phone: Fax:
Demolition Contractor: Phone: Fax:
Transporter: Phone: Fax:

Waste Material: () Concrete () Asphalt () Painted () Unpainted
Use of Site: () Residential () Commercial () Industrial () Vacant Land
() City () State () Federal
Job/Project: () Demolition () Renovation () Construction () Other

Job Number: P.O. Number:

Date Ready For Inspection: Demolition Date:

The undersigned hereby certify that the above information is true and correct.

Bill Charges To: Date:
Authorized Signature: Title:

Owner of Property: Date:
Authorized Signature: Title:

Demolition Contractor: Date:
Authorized Signature: Title:

Transporter: Date:
Authorized Signature: Title:

Qualified Environmental Scientist: Date:
Authorized Signature: Title:

FOR RECYCLING FACILITY USE ONLY

Clearance No.: Entered by: Date:
Inspection Date: () Approved () Declined Initials: Date:
Scale: Entered by: Date:
Comments:

- A. Phone at least 24 hours prior to transporting material to the Recycling Facility.
B. Clearance Numbers will be issued from 7:30 am to 3:30 pm, Monday through Friday.
C. No Clearance Numbers will be issued or authorized during weekends (Saturday/Sunday) and holidays.
D. All Clearance Numbers will expire 6 months after issuance. Generators must submit a new Request for Clearance Number Form for approval prior to the expiration date.

Grace Pacific Corporation Recycling Facility
91-920 Farrington Highway
Kapolei, Hawaii 96707
Telephone (808) 672-3535 / Facsimile (808) 672-3998

UNIFORM SOLID WASTE MANIFEST		1. Clearance No.		2. Load No.	
3. Generator's Name and Mailing Address		4. Origin Facility Name and Location		5. Generator's Phone No.	
6. Transporter Company Name				7. Transporter's Phone No.	
8. Designated Facility Name and Site Address Grace Pacific Corporation Recycling Facility 91-920 Farrington Highway, Kapolei, Hawaii 96707				9. Facility's Phone No. (808) 672-3535	
10. Description (Including Proper Shipping Name and Class)		11. Total Quantity	12. Unit (Wt. / Vol.)	13. Type of Material	
a.					
b.					
14. Additional Descriptions for Materials Listed Above			Material Types: C = Concrete A = Asphalt		
15. Special Handling Instructions and Additional Information					
16. Generator's Certification: I hereby declare that the contents of this consignment are fully and accurately described above by proper shipping name and are classified, packed, marked, and labeled, and are in all respects in proper condition for transport by highway and/or sea-going vessel according to applicable international and national government regulations.					
Print Name / Typed Name		Signature		Date	
17. Transporter Acknowledgement of Receipt of Materials					
Print Name / Typed Name		Signature		Date	
18. Designated Facility Acknowledgement of Materials Received					
Print Name / Typed Name		Signature		Date	



ANALYSIS PROCEDURES

**Grace Pacific Corporation Recycling Facility
91-920 Farrington Highway
Kapolei, Hawaii 96707**

**Telephone (808) 672-3535
Facsimile (808) 672-3998**

September 04, 2007

TABLE OF CONTENTS

1.0 BACKGROUND INFORMATION	1
2.0 ANALYSIS PROCEDURES FOR ACCEPTED WASTE MATERIAL	1
3.0 REPORTING REQUIREMENTS	2
4.0 ACCEPTED MATERIAL ANALYSIS PROCEDURES FLOW CHART.....	3
5.0 ACCEPTED MATERIAL ANALYSIS LOG.....	4
6.0 ACCEPTED MATERIAL ANALYSIS REPORT.....	5
7.0 COLOR GUIDE FOR LEADCHECK SWAB.....	7

ACCEPTED MATERIAL ANALYSIS PLAN

**Grace Pacific Corporation Recycling Facility
91-920 Farrington Highway, Kapolei, Hawaii 96707
Telephone (808) 672-3535 / Facsimile (808) 672-3998**

1.0 BACKGROUND INFORMATION

The Grace Pacific Corporation recycling facility operates in accordance with the recycling permit issued by the State of Hawaii Department of Health (DOH) Office of Solid Waste Management (Permit No. RY-0049-02). The recycling facility only accepts concrete and asphalt that is clean, uncontaminated, and source-separated. Mixed incoming loads are not accepted. Generators of material for recycling use Incoming Material Profile Forms to document that the incoming material meets the conditions of the permit.

Materials accepted for recycling consist of unprocessed material. The volume of unprocessed material stored at the recycling facility is limited to 15,000 cubic yards at any given time. The analysis procedure for unprocessed material is described in the following section. Upon passing the analysis procedure, this material is processed on a daily basis. The material that fails the analysis procedure is either disposed of at a permitted landfill or returned to the generator.

2.0 ANALYSIS PROCEDURES FOR ACCEPTED WASTE MATERIAL

Upon acceptance of painted material, the load will be directed to a dedicated painted material storage area and separated from the clean unprepared materials.

Analysis is conducted by using a lead check swab for each color paint coming from each source. The lead check swab is a screening tool to determine lead presence on painted surfaces based on a reaction between lead and a lead reactive reagent. The analysis procedure is described below:

1. If the surface is dirty, clean the surface with a household cleaner, rinse, and dry.
2. Peel the paint, if possible, to expose paint surfaces.
3. Activate the swab according to the instructions.
4. Rub the activated swab across the surface of the paint.
5. Examine the swab tip for a color change to pink or red. The lead concentration can be estimated by visually comparing the swab color to the color gradation table. Solid pink or red suggests a lead concentration higher than 0.5%, while white or pale pink suggest a lead concentration less than 0.3%.

6. If the swab tip suggests a lead concentration less than 0.5% (or 5,000 parts per million [ppm]), the material can be transported to the clean unprocessed storage piles for further processing. Log the analysis activity in the Accepted Material Analysis Log.
7. If the swab tip suggests lead concentrations in the paint at levels higher than 0.5% (or 5,000 ppm), the material will either be disposed of at the permitted landfill or returned to the generator. A written report will be generated and submitted to the DOH Solid and Hazardous Waste Branch (SHWB) for DOH's records. Log the analysis activity in the Accepted Material Analysis Log.

3.0 REPORTING REQUIREMENTS

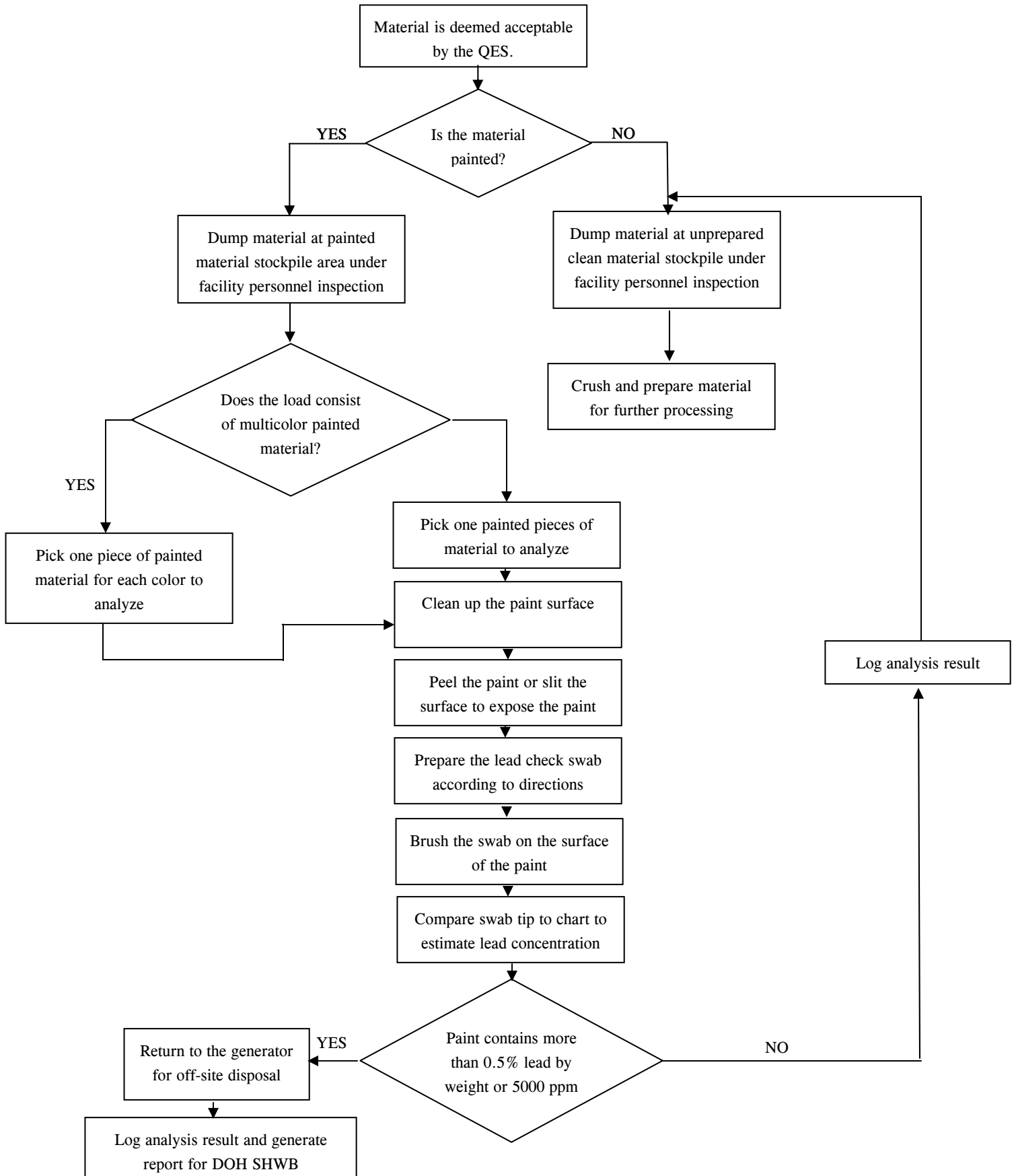
If accepted material analysis suggests a concentration of lead in paint higher than 0.5% (or 5,000 ppm), a written report will be generated and signed by the facility responsible personnel. The written report shall consist of the following information:

- source of material
- the Material Profile Form completed by the generator
- the laboratory analytical report submitted by the generator
- the laboratory chain-of custody submitted by the generator
- the date of material acceptance
- the date of swab analysis
- the maker and type of swab
- the result of swab analysis
- the personnel conducting the swab analysis
- the material disposal procedure

An annual report will be submitted to the DOH describing the operations conducted at the recycling facility for each fiscal year (July 1 through June 30). The annual report will include the total tonnage for each type of material that the recycling facility received, processed, rejected, recycled, and disposed of. Also included will be the destination of all materials leaving the recycling facility and a summary of incidents that occurred outside of normal operations. The annual report will be submitted by July 31 each year to the DOH at the following address:

- State of Hawaii Department of Health
Environmental management Division
Solid and Hazardous Waste Branch
P.O Box 3378
Honolulu, Hawaii 96801-3378

ANALYSIS PROCEDURES FLOW CHART



ACCEPTED MATERIAL ANALYSIS REPORT

Grace Pacific Corporation Recycling Facility
91-920 Farrington Highway, Kapolei, Hawaii 96707
Telephone (808) 672-3535 / Facsimile (808) 672-3998

1. Accepted Material Information

Description of Material: _____

Amount of Material: _____ tons

Date Received: _____

Generator Information: _____

2. Incoming Documentation

Incoming Material Profile Form: Attached Not attached

If not attached, provide explanation: _____

Laboratory Documentation: Attached Not attached

If not attached, provide explanation: _____

3. Accepted Material Analysis

Type of swab: _____

Maker of swab: _____

Date of swab analysis: _____

Result of swab analysis: _____

Describe swab procedure: _____

4. Final disposition if lead content is larger than 0.5% by weight or 5000 ppm lead

Return to the generator Off-Site Landfill Disposal

Other: _____

5. Please note any irregularities or changes from the analysis plan

6. Personnel Certification

Name: _____

Title: _____

Signature: _____ Date: _____

The personnel's signature above certifies that he conducted the analysis of the above material according to the Accepted Material Analysis Plan and that all the information contained in this Form is true and accurate to the best of his/her knowledge.

7. Recycling Facility Certification

By signing this Accepted Material Analysis Form, the Recycling Facility certifies the following:

- A. The statements and attachments contain true and accurate descriptions of the accepted material. All relevant information regarding known or suspected hazards in the possession of the Recycling Facility has been disclosed.
- B. The analysis data presented in this Form or attached to this Form were derived from representative material as described in the Grace Pacific Makakilo Recycling Plant Accepted Material Analysis Plan.
- C. Grace Pacific Makakilo Recycling Facility will notify the DOH of any changes in the analysis procedure or acceptance material characteristics.

Name: _____

Title: _____

Authorized Signature: _____ Date: _____

**COLOR GUIDE FOR LEADCHECK® SWABS
 PAINT**

LeadCheck® Swabs detect lead on painted surfaces and on other surfaces based on a reaction between lead and the lead reactive reagent. In this interaction color development increases in proportion to increasing lead concentration. LeadCheck® Swabs is the only qualitative colorimetric lead detection product that offers the user the opportunity to estimate lead concentration on a site. When LeadCheck® Swabs are used, it is possible to suggest lead concentration ranges associated with each series of color gradations.

A series of colors developed at each concentration of lead would produce the following ranges.



HIGH

5.0% -----> 10.0%
 High Lead Concentration Range
 (5.0% to 10.0% lead)



MEDIUM

0.5% -----> 3.0%
 Medium Lead Concentration Range
 (0.5% to 3.0% lead)



LOW

0.0% -----> 0.3%
 Low Lead Concentration Range
 (0.0% to 0.3% lead)

NOTE: 0.06% is 600 ppm; 0.1% is 1000 ppm; 0.5% is 5000 ppm, etc.